

TASCAM

TEAC Professional Division

SERVICE MANUAL

MD-350

Minidisc Deck

CONTENTS

1. SAFETY INFORMATION	2
2. SPECIFICATIONS	3
3. DISASSEMBLING AND REASSEMBLING (MD MECH.)	4
4. EXPLODED VIEWS AND PARTS LIST	10
5. PC BOARDS AND PARTS LIST	15
6. INCLUDED ACCESSORIES	21

目次

1. SAFETY INFORMATION	2
2. 仕様	3
3. 分解と組立 (MDメカ)	4
4. 分解図とパーツリスト	10
5. 基板図とパーツリスト	15
6. 付属品	21

INSTRUCTIONS FOR SERVICE PERSONNEL

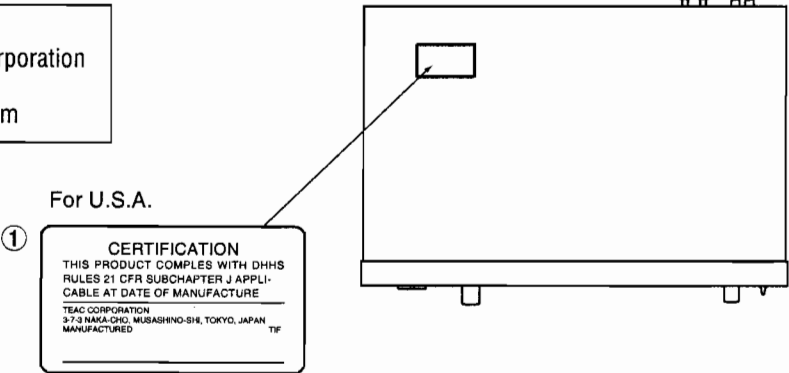
BEFORE RETURNING APPLIANCE TO THE CUSTOMER, MAKE LEAKAGE-CURRENT OR RESISTANCE MEASUREMENTS TO DETERMINE THAT EXPOSED PARTS ARE ACCEPTABLY INSULATED FROM THE SUPPLY CIRCUIT.

1. SAFETY INFORMATION

This product has been designed and manufactured according to FDA regulations "title 21, CFR, chapter 1, subchapter J, based on the Radiation Control for Health and Safety Act of 1968", and is classified as a class 1 laser product. There is no hazardous invisible laser radiation during operation because invisible laser radiation emitted inside of this product is completely confined in the protective housings. The label required in this regulation is shown ①.

● CAUTION
USE OF CONTROLS OR ADJUSTMENT OR PERFORMANCE OF PROCEDURES OTHER THAN THOSE SPECIFIED HEREIN MAY RESULT IN HAZARDOUS RADIATION EXPOSURE.

Optical pickup: Type : KMS-260A
Manufacturer : SONY Corporation
Laser output : 4.55 mW
Wavelength : 785±20 nm



2. SPECIFICATIONS

仕様

Format : MiniDisc digital audio system
 Number of channels : 2 (stereo), 1 (mono)
 Sampling frequency : 44.1 kHz
 Recording system : Magnetic field modulation overwrite system
 Compression system :
 ATRAC (Adaptive TRansform Acoustic Coding)
 Recording/playback time :
 SP, 80 minutes max.
 Mono, 160 minutes max.
 LP2, 160 minutes max.
 LP4, 320 minutes max.
 Frequency response : 20 Hz–20 kHz \pm 0.5 dB (playback)
 Signal-to-noise ratio : More than 94 dB (playback, A filter)
 Dynamic range : More than 94 dB (playback, 1 kHz, A filter)
 Total harmonic distortion : Less than 0.013 %
 Analog input/output connectors :
 Input :
 Balanced : XLR, +4 dBu (ref.), 10 kohms
 Unbalanced : RCA, –10 dBV (ref.), 50 kohms
 Output :
 Balanced : XLR, +4 dBu (ref.), 150 ohms
 Unbalanced : RCA, –10 dBV (ref.), 600 ohms
 Headphones output : Max. 25 mW + 25 mW, 32 ohms
 Digital input/output connectors :
 Input 1, 2 :
 TOS (EIAJ RC-5720), IEC60958 Type II (S/PDIF)
 Output :
 TOS (EIAJ RC-5720), IEC60958 Type II (S/PDIF)
 KEYBOARD connector : Mini DIN 6 pin
 Power supply :
 120 VAC, 60 Hz (U.S.A./Canada model),
 230 VAC, 50 Hz (Europe/General export model),
 240 VAC, 50 Hz (Australia model)
 Power consumption : 13 W
 Dimensions (W x H x D) : 482.6 x 94 x 313 (mm)
 Weight : 5.5 kg
 Accessories :
 Remote control unit (RC-32) x 1
 Battery (SUM-3, "AA", "R6" type) x 2
 Lettering guide x 1
 Rack mounting screw kit x 1

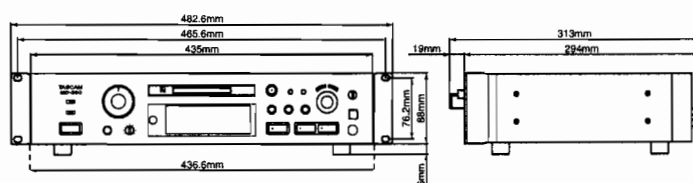
形式 : ミニディスク
 使用ディスク : ミニディスク
 チャンネル数 : 2 (STEREO) / 1 (MONO)
 サンプリング周波数 : 44.1 kHz
 記録方式 : Magnetic field modulation overwrite
 圧縮方式 : ATRAC (Adaptive TRansform Acoustic Coding)
 録音時間 [80分ディスク使用時] :
 80分 (SP)、160分 (MONO)、160分 (LP2)、320分 (LP4)
 周波数特性 : 20 Hz～20 kHz \pm 0.5 dB
 S/N比 (再生時) : 94 dB以上 (A フィルター)
 ダイナミックレンジ (再生時) : 94 dB以上 (1 kHz, A フィルター)
 全高調波歪率 : 0.013 %以下
 アナログ入力/出力 :
 バランス入力 : XLR
 規定入力レベル : +4 dBu
 入力インピーダンス : 10 k Ω
 アンバランス入力 : RCA
 規定入力レベル : –10 dBV
 入力インピーダンス : 50 k Ω
 バランス出力 : XLR
 規定出力レベル : +4 dBu
 出力インピーダンス : 150 Ω
 アンバランス出力 : RCA
 規定入力レベル : –10 dBV
 入力インピーダンス : 600 Ω
 PHONES 出力 : ステレオホンジャック
 最大出力レベル : 25 mW + 25 mW
 負荷インピーダンス : 32 Ω
 デジタル入力 1, 2 : TOS (EIAJ RC-5720)
 フォーマット : IEC60958 Type II (S/PDIF)
 デジタル出力 : TOS (EIAJ RC-5720)
 フォーマット : IEC60958 Type II (S/PDIF)
 KEYBOARD : Mini DIN 6 pin
 電源 : 100 VAC, 50 – 60 Hz
 消費電力 : 13 W
 外形寸法 (幅×高さ×奥行き) : 482.6 × 94 × 313 mm
 質量 : 5.5 kg
 付属品 :
 RC-32 ワイヤレスリモートコントロールユニット × 1
 乾電池 (単3, SUM-3) × 2
 テンプレート × 1
 ラックマウントビスキット × 1

● Improvements may result in specifications or feature changes without notice.

* EIAJは日本電子機械工業会規格に定められた測定法によるものです。
 * 仕様および外観は、改善のため予告なく変更することがあります。

US and foreign patents licensed from Dolby Laboratories Licensing Corporation.

本機は、ドルビーラボラトリーズライセンシングコーポレーションの米国及び外国特許に基づく許諾製品です。

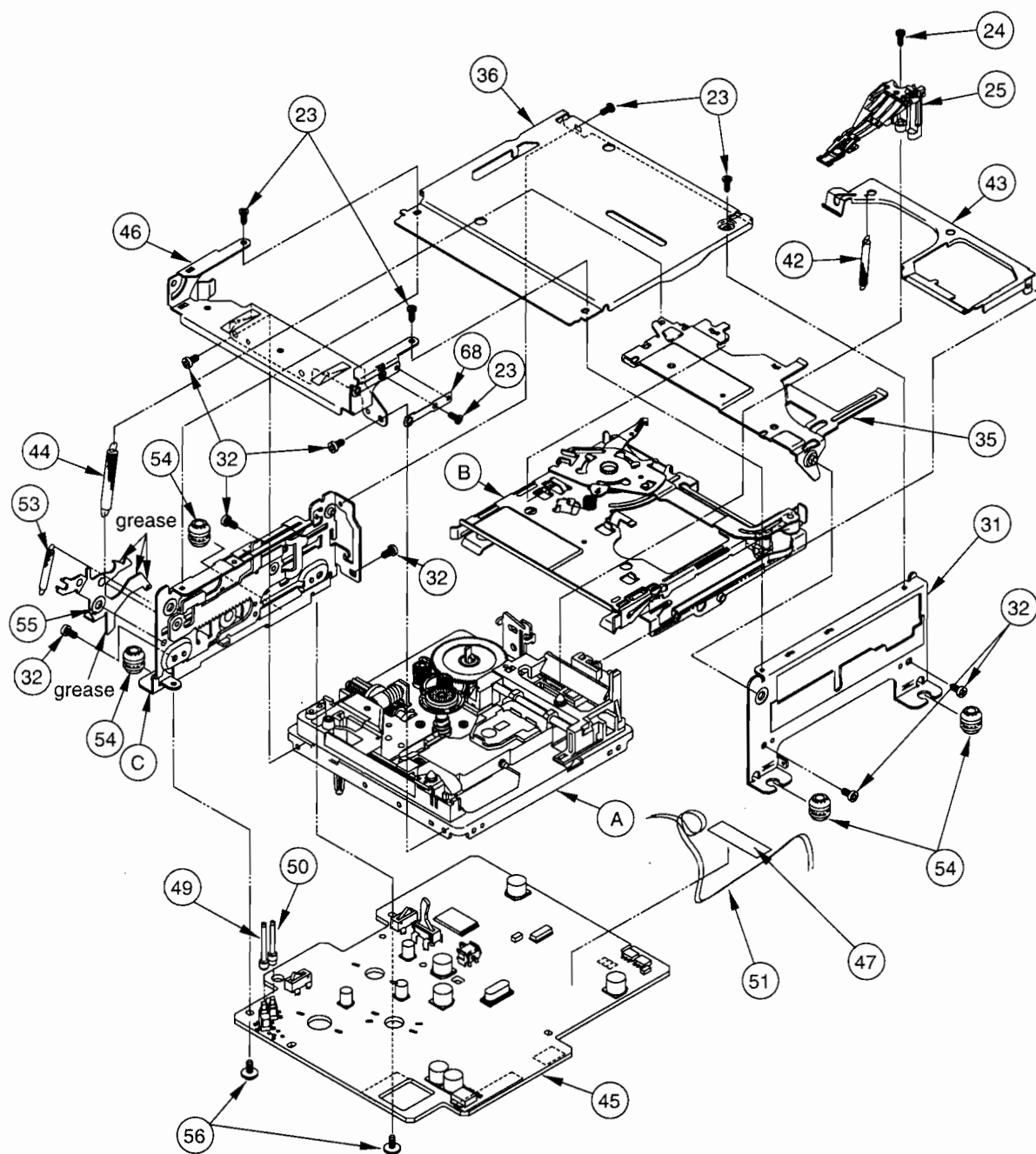


3. DISASSEMBLING AND REASSEMBLING (MD MECH.)

分解と組立 (MDメカ)

3-1. Disassembling/reassembling the main block

3-1. メインブロックの分解・組立



1. Peel off the tape ④⑦ fixing the O/W HD lead wire.
2. Remove the O/W HD lead wire ⑤① from the PCB CONTROL BLK ④⑤.
3. Desolder the 6 MOTOR terminals.
4. Solder the short land (Fig. 3-8) on the FPC PICK ④⑧ to short-circuit it.
5. Disconnect the FPC PICK ④⑧ from the PCB CONTROL BLK ④⑤.
6. Unscrew the 2 screws ⑤⑥ to remove the PCB CONTROL BLK ④⑤.
7. Remove the SW NOB (L) ④⑨ and SW NOB (S) ⑤⑩.
8. Unscrew the 2 screws ②③ and 2 screws ③② to remove the LID HOLD BKT ④⑥.
9. Unscrew the screw ②③ to remove the LID HOLD ⑥⑧.
10. Unscrew the 2 screws ②③ to remove the TOP PLATE ③⑥.
11. Unscrew the screw ②④ to remove the O/W HD ②⑤.
12. Remove the HOLDER A/SPG ④④.
13. Unscrew the 2 screws ③② to remove the SIDE BKT (R) ③①.
14. Remove the 2 INSULATORS ⑤④.
15. Remove the LID OPENER SPG ⑤③ and LID OPENER ⑤⑤.
16. Remove the HOLDER ARM ③⑤.
17. Remove the disc loading mechanism ⑧.
18. Remove the LIFTER SPG ④②.
19. Unscrew the 3 screws ③② to remove the mode switching mechanism ①⑥.
20. Remove the 2 INSULATORS ⑤④.
21. Remove the HD LIFTER ④③.

Notes:

- Do not mistake SW NOB (L) for SW NOB (S) when reassembling.
- Be careful not to deform the O/W HD ②⑤ when handling it.
- Apply screw-locking compound to the tip of the screw ②④ after reinstalling the O/W HD.
- Coil the O/W HD lead wire around the SLED BASE ①⑦ once and twist it more than twice. (Fig. 3-1)
- Reinstall the HOLDER A/SPG ④④ so that its drawing pen faces inward. (Fig. 3-2)
- Take care not to deform the HD LIFTER.

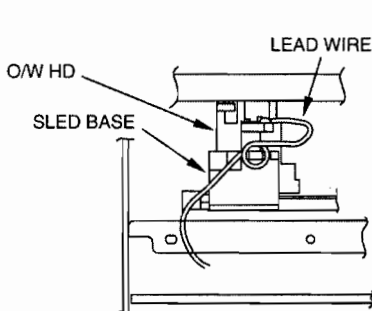


Fig. 3-1

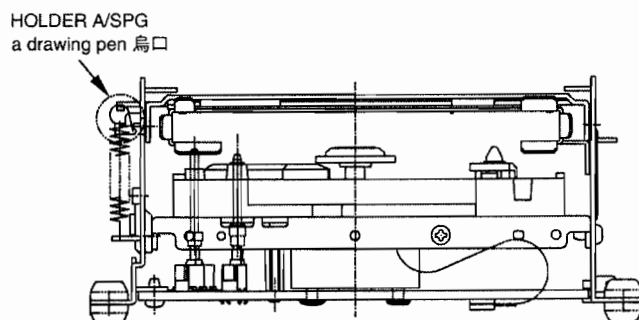


Fig. 3-2

1. O/W HD リード線固定用のテープ ④⑦ をはがす。
2. O/W HD リード線 ⑤① を PCB CONTROL BLK ④⑤ より外す。
3. MOTOR 端子 6 本の半田を取り除く。
4. FPC PICK ④⑧ のショートランド (Fig. 3-8) を半田にてショートする。
5. FPC PICK ④⑧ を PCB CONTROL BLK ④⑤ のコネクタより外す。
6. ネジ ⑤⑥ 2 本を外し、PCB CONTROL BLK ④⑤ を外す。
7. SW NOB (L) ④⑨、SW NOB (S) ⑤⑩ を外す。
8. ネジ ②③ 2 本と ③② 2 本を外し、LID HOLD BKT ④⑥ を外す。
9. ネジ ②③ を外し、LID HOLD ⑥⑧ を外す。
10. ネジ ②③ 2 本を外し、TOP PLATE ③⑥ を外す。
11. ネジ ②④ を外し、O/W HD ②⑤ を外す。
12. HOLDER A/SPG ④④ を外す。
13. ネジ ③② 2 本を外し、SIDE BKT (R) ③① を外す。
14. INSULATOR ⑤④ 2 コを外す。
15. LID OPENER SPG ⑤③、LID OPENER ⑤⑤ を外す。
16. HOLDER ARM ③⑤ を外す。
17. ディスクローディング機構部 ⑧ を外す。
18. LIFTER SPG ④② を外す。
19. ネジ ③② 3 本を外し、モード切替機構部 ①⑥ を外す。
20. INSULATOR ⑤④ 2 コを外す。
21. HD LIFTER ④③ を外す。

注意

- 組立時、SW NOB (L)と SW NOB (S)を間違えないこと。
- O/W HD ②⑤ を変形させないように取り扱いに注意すること。
- O/W HD 取付後は、ネジ ②④ の先端にネジロックを塗布する。
- O/W HD リード線は、SLED BASE ①⑦ に 1 ターン巻き付け、2 回以上よじる。(Fig. 3-1)
- HOLDER A/SPG ④④ は、烏口が内側に向くように取り付けること。(Fig. 3-2)
- HD LIFTER の変形に注意すること。

1. Remove the HOLDER STOPPER ⑤⑧ and STOPPER SPG ⑤⑦.
2. Press the claw of the REAR GUIDE BLK ⑫ toward A (Fig. 3-3) to remove the 2ND GEAR ⑧.
3. Remove the 1ST GEAR ⑨.
4. Press the claw of the REAR GUIDE BLK ⑫ toward B (Fig. 3-4) to remove the SLED PINION ⑦.
5. Unscrew the 2 screws ②③ and screw ②④ to remove the REAR GUIDE BLK ⑫.
6. Remove the SHAFT P/U ⑩ and SPINDLE STABILIZER ⑪.
7. Remove the P/U ASSY ⑩.
8. Unscrew the 3 screws ②② to remove the FRONT GUIDE BLK ⑬ and LOCATOR ⑭.
9. Remove the 2ND WORM ⑩⑥ and washer ⑤② to remove the LDG ASSY BLK ⑤ and BUSH ⑥⑥.
10. Remove the SLED MOTOR ASSY ② and LDG MTR ASSY ③.
11. Remove the SW LEVER SPG ②⑩.
12. Remove the SW LEVER ⑤.

Notes:

- Reinstall the REAR GUIDE BLK after hooking the 2 claws on the chassis. (Fig. 3-5).
- Remove the SLED/LDG MTR ASSY from the chassis, and take care not to scratch the press-fitting gear when reinstalling it.
- Reinstall the SLED/LDG MTR ASSY paying attention to the polarity of its terminals. (Fig. 3-6)
- Place the SPINDLE STABILIZER within the outer diameter "a" of the impression (#). (Fig. 3-7)

1. HOLDER STOPPER ⑤⑧、STOPPER SPG ⑤⑦ を外す。
2. REAR GUIDE BLK ⑫ のツメを A 方向 (Fig. 3-3) に押して、2ND GEAR ⑧ を外す。
3. 1ST GEAR ⑨ を外す。
4. REAR GUIDE BLK ⑫ のツメを B 方向 (Fig. 3-4) に押して、SLED PINION ⑦ を外す。
5. ネジ ②③ 2本とネジ ②④ 1本を外し、REAR GUIDE BLK ⑫ を外す。
6. SHAFT P/U ⑩、SPINDLE STABILIZER ⑪ を外す。
7. P/U ASSY ⑩ を外す。
8. ネジ ②② 3本を外し、FRONT GUIDE BLK ⑬ と LOCATOR ⑭ を外す。
9. 2ND WORM ⑩⑥、ワッシャー ⑤② を外し、LDG ASSY BLK ⑤ と BUSH ⑥⑥ を外す。
10. SLED MOTOR ASSY ② と LDG MTR ASSY ③ を外す。
11. SW LEVER SPG ②⑩ を外す。
12. SW LEVER ⑤ を外す。

注意

- REAR GUIDE BLK は、2箇所ツメをシャーシに引っ掛けてから取り付ける。(Fig. 3-5)
- SLED、LDG MTR ASSY をシャーシより取り外し、取り付け時に圧入しているギアに傷つけないこと。
- SLED、LDG MTR ASSY は、端子の極性に注意して取り付けること。(Fig. 3-6)
- SPINDLE STABILIZER は、# 印シボリマークの外径 a の範囲にあること。(Fig. 3-7)

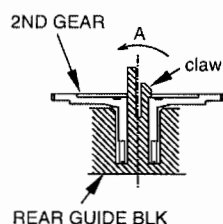


Fig. 3-3

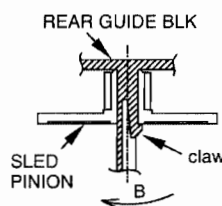


Fig. 3-4

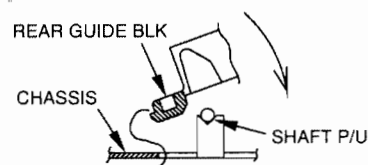


Fig. 3-5

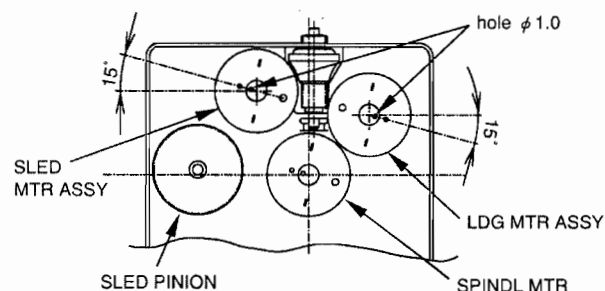


Fig. 3-6

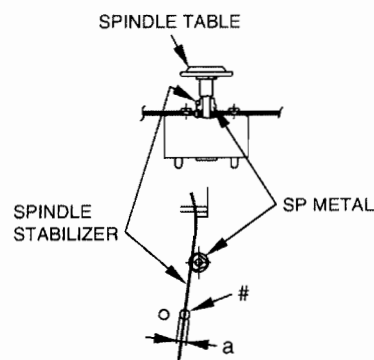
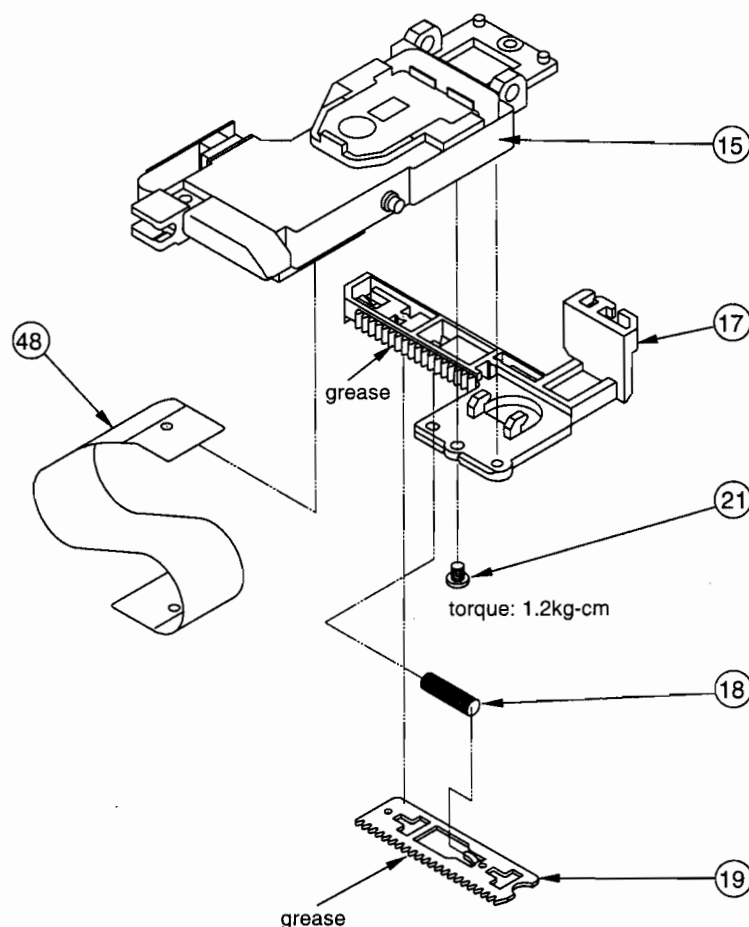


Fig. 3-7

3-3. Disassembling/reassembling the P/U ASSY

3-3. P/U ASSY の分解・組立



1. Solder the short land (Fig. 3-8) on the PICK UP UNIT ⑮ and disconnect the FPC PICK ④⑧.
2. Unscrew the screw ②① and remove the SLED BASE ⑰.
3. Remove the RACK SLIDE SPG ⑱ from the SLED BASE and press the claw toward A (Fig. 3-9) to remove the RACK SLIDER ⑲.

- Apply screw-locking compound to the tip of the screw ②① after completing installation.

1. PICK UP UNIT ⑮ のショートランド (Fig. 3-8) を半田にてショートし、FPC PICK ④⑧ をコネクタより外す。
2. ネジ ②① を外し、SLED BASE ⑰ を外す。
3. SLED BASE より RACK SLIDE SPG ⑱ を外し、A 方向 (Fig. 3-9) にツメを押して、RACK SLIDER ⑲ を外す。

- 組立後は、ネジ ②① の頭にネジロックを塗布する。

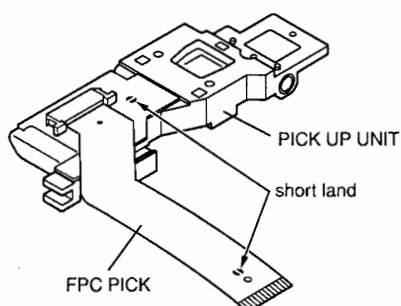


Fig. 3-8

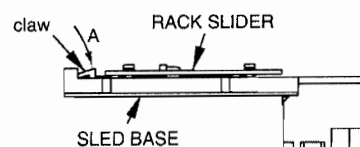
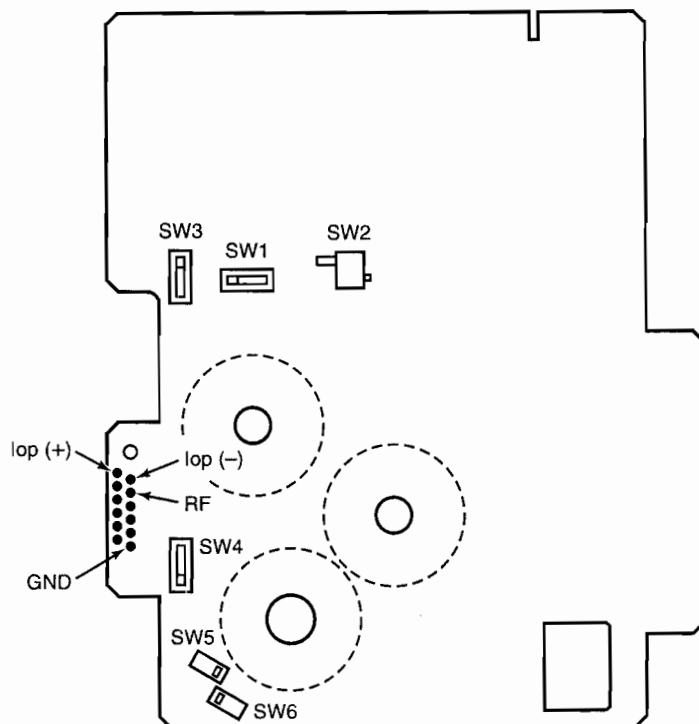


Fig. 3-9

3-4. SW positioning

3-4. SW 配置図



3-5. Handling precautions

- Take sufficient preventive measures against static electricity when disassembling or reassembling the mechanism.
- Follow the reverse disassembly procedure to reassemble.
- Refer to the figures for the screw tightening torque or the lubrication target for grease or screw-locking compound. Note that if the standard torque is used to tighten the screw when reassembling, it may strip the screw threads.
- Use Molicot YM-103 for grease.

Adjustment is required when replacing the PICK UP UNIT and PCB CONTROL BLK.
Replace the DRIVE ASSY since this unit cannot be adjusted.

3-5. メカ取扱上の注意事項

- メカの分解・組立時は、静電対策を施すこと。
- 組立は分解手順の逆に行なうこと。
- ネジの締め付けトルクおよびグリス、ネジロック塗布箇所は図中参照のこと。尚、再組立時は、規定のトルクで締めるとネジばかになる可能性があるため注意すること。
- グリスはモリコート YM-103 を使用のこと。

PICK UP UNIT および PCB CONTROL BLK の交換は、調整が必要となります。
本機では調整ができませんので、DRIVE ASSY を交換してください。

PARTS LIST SECTION

NOTES

- PC boards shown are viewed from parts side.
- Parts marked with * require longer delivery time.
- The parts with no reference number or no parts number in the exploded views are not supplied.
- As regards the resistors and capacitors, refer to the circuit diagrams contained in the manual.
- △ Parts marked with this sign are safety critical components. They must be replaced with identical components - refer to the appropriate parts list and ensure exact replacement.
- Parts of [] mark can be used only with the version designated.
[J]: JAPAN [US/C/GE]: U.S.A./CANADA/GENERAL EXPORT
[E]: EUROPE [UK]: U.K. [A]: AUSTRALIA

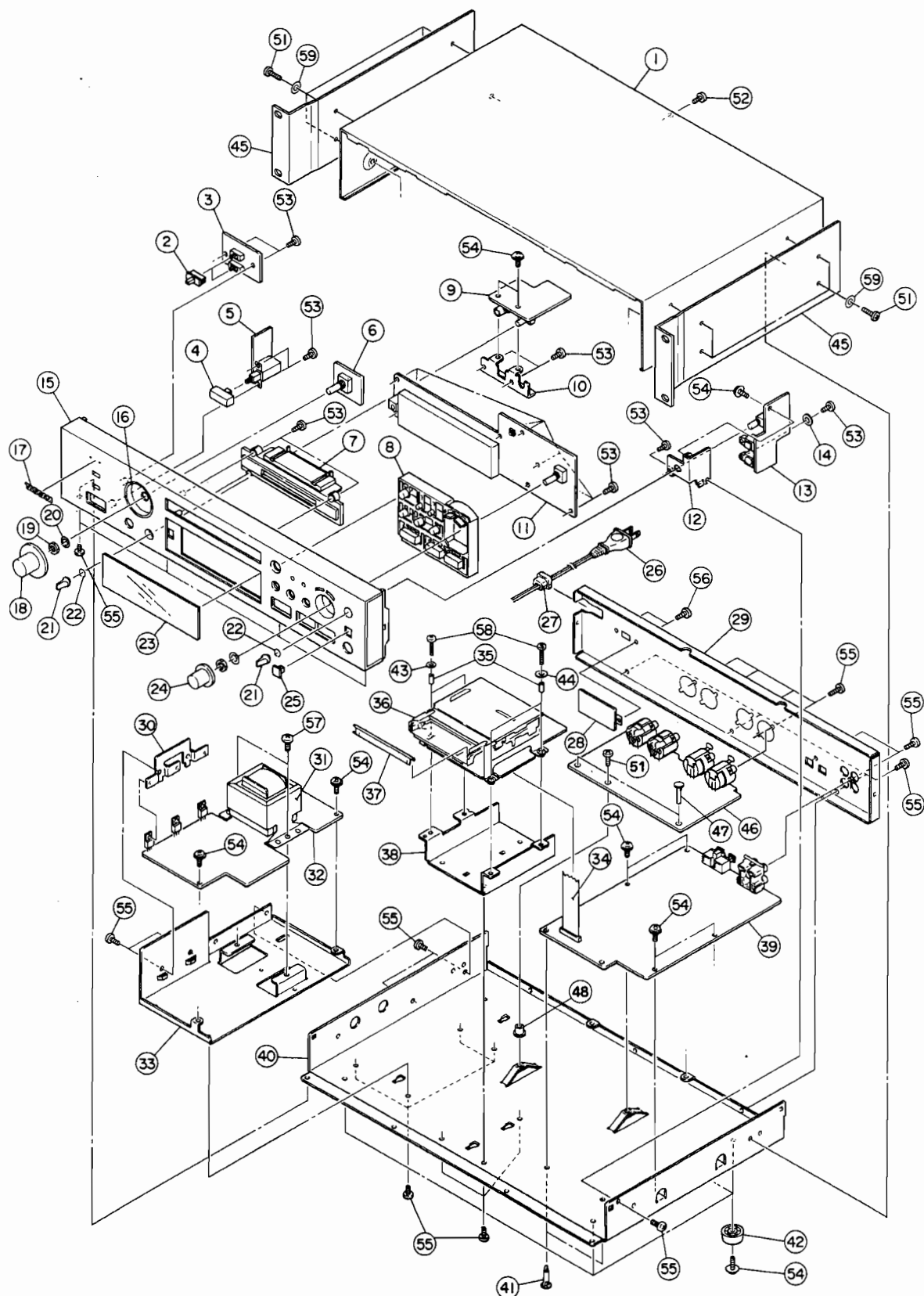
注 意

- プリント基板は部品面が示されています。
- *印の部品は納期が若干かかります。
あらかじめご了承ください。
- 分解図に部番のない部品及び品番のない部品は供給しません。
- 標準の抵抗、コンデンサーは省略してあります。
回路図を参照してください。
- △は安全重要部品です。
交換する時は必ずティアック指定の部品を使用してください。
- 仕向先
[J]: JAPAN [US/C/GE]: U.S.A./CANADA/GENERAL EXPORT
[E]: EUROPE [UK]: U.K. [A]: AUSTRALIA

4. EXPLODED VIEWS AND PARTS LIST

分解図とパーツリスト

EXPLODED VIEW-1



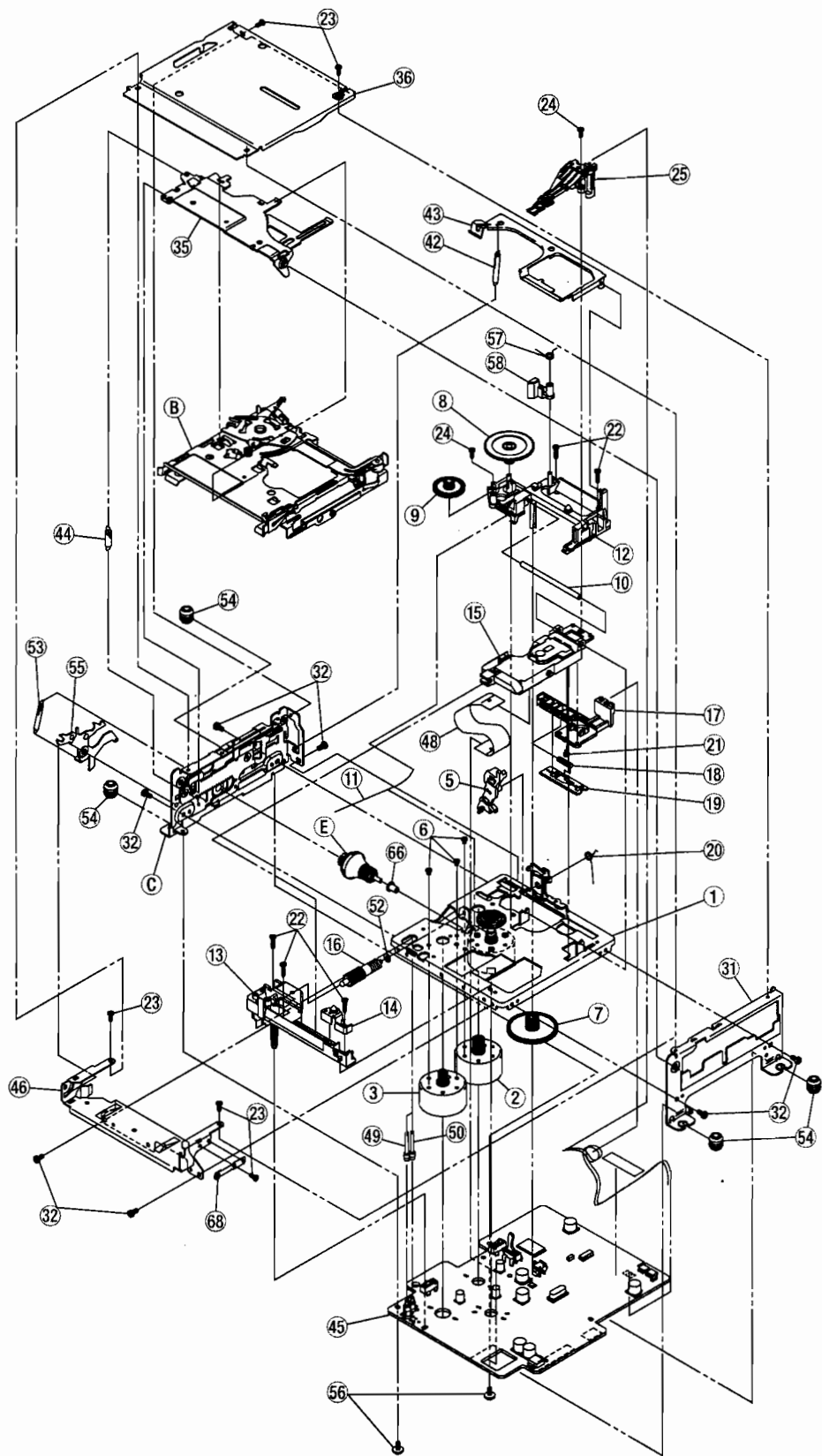
EXPLODED VIEW-1

REF. NO.	PARTS NO.	DESCRIPTION	REMARKS
1- 1	*3M0058100A	BONNET(B)	
1- 2	3M0057400A	KNOB, SLIDE(B)	
1- 3		PCB ASSY, SW	PCB ASSY, GATHER (Refer to page 19)
1- 4	3M0057520A	BUTTON, POW 9X23(B)	
1- 5		PCB ASSY, POWER SW	PCB ASSY, GATHER (Refer to page 19)
1- 6		PCB ASSY, VR	PCB ASSY, GATHER (Refer to page 19)
1- 7	3M0057140A	ESCUTCHEON, DISC(B)	
1- 8	*3M0057020A	BUTTON, MAIN(B)	
1- 9	*3E9512120A	PCB ASSY, PHONE	PCB ASSY, GATHER (Refer to page 19)
1-10	*3M0058500A	BRACKET, PHONE	
1-11		PCB ASSY, FRONT	PCB ASSY, GATHER (Refer to page 19)
1-12	*3M0058400A	BRACKET, OPT PCB	
1-13		PCB ASSY, D-IN	PCB ASSY, GATHER (Refer to page 19)
1-14	*3M0060100A	PLAIN WASHER, M3 D11.5	
1-15	*3M0056940A	PANEL, FRONT(B)	
1-16	*3M0055010B	RING(B)	
1-17	*5720254101	NAME PLATE, TASCAM(S)	
1-18	3M0052820C	KNOB, R	
1-19	*3M001340	NUT, VR M9	
1-20	*3M001350	PLAIN WSHR, VR M9.1	
1-21	3M0024800A	KNOB, PHONE VOLUME	
1-22	*3M0062700A	RTNG RING-C, D7.7-0.8	
1-23	3M0057620A	WINDOW, FL	
1-24	3M0057320A	KNOB, D15(B)	
1-25	3M0057700A	COVER, JACK(B)	
1-26	△ *3E009000	POWER CORD [J]	
	△ *3E009230	POWER CORD [US/C/GE]	
	△ *3E015210	POWER CORD [E]	
	△ *3E000350	POWER CORD [UK]	
	△ *3E000360	POWER CORD [A]	
1-27	△ *3M000880	BUSHING, #2271	
1-28		PCB ASSY, V SELECT [US/C/GE]	PCB ASSY, GATHER (Refer to page 19)
1-29	*3M0058020B	PANEL, REAR	
1-30	*3M0025900A	PLATE, IC	
1-31	△ 3E0073900A	TRANSFORMER	
1-32		PCB ASSY, TRANS	PCB ASSY, GATHER (Refer to page 19)
1-33	*3M0058200A	BASE, TRANS	
1-34	*3E0070800A	FLAT CABLE, FFC 24P 110MM	
1-35	*3M0060200A	SPACER, M2 L7.5	
1-36	M01252900B	DRIVE ASSY, DYME2Z202B	
1-37	*3M0057200A	FLAP, DISC(B)	
1-38	*3M0058300A	BASE, MD MECH	
1-39		PCB ASSY, MAIN	PCB ASSY, GATHER (Refer to page 19)
1-40	*3M0057900B	CHASSIS, MAIN	
1-41	*3M0062600A	SUPPORT, PCB SCD-12	
1-42	*3M001950	FOOT, 21MM	
1-43	*3M0078300A	PLAIN WASHER, 2.3X7.6X0.8	

EXPLODED VIEW-1

REF. NO.	PARTS NO.	DESCRIPTION	REMARKS
1-44	* 3M0060000A	PLAIN WASHER, 2.3X10X0.8	
1-45	* 3M0073200B	RACK MOUNT ANGLE	
1-46	* 3E9518200A	PCB ASSY, BAL I/O	
1-47	* 3M0076400A	PCB SPACER, RSPS-18L	
1-48	* 3M0078200A	ROUND SPACER 3-7	
1-51	* 3B0001812B	SCREW, J, S M3X12 (BLK)	
1-52	* 3B0003808A	SCREW, VPC M3X8 (BLK)	
1-53	* 3B0000808A	SCREW, BPP M3X8	
1-54	* 3B0001306A	SCREW, J, S M3X6	
1-55	* 3B0005708B	SCREW, BPB M3X8 (BLK)	
1-56	* 3B0004406A	SCREW, BPS M3X6 (BLK) [US/C/GE]	
1-57	* 3B0005408A	SCREW, BPB M4X8	
1-58	* 3B0006812A	SCREW, BPB M2X12	
1-59	* 3M002020	FIBER WSHR, 3X8X0.3T (BLK)	

EXPLODED VIEW-2



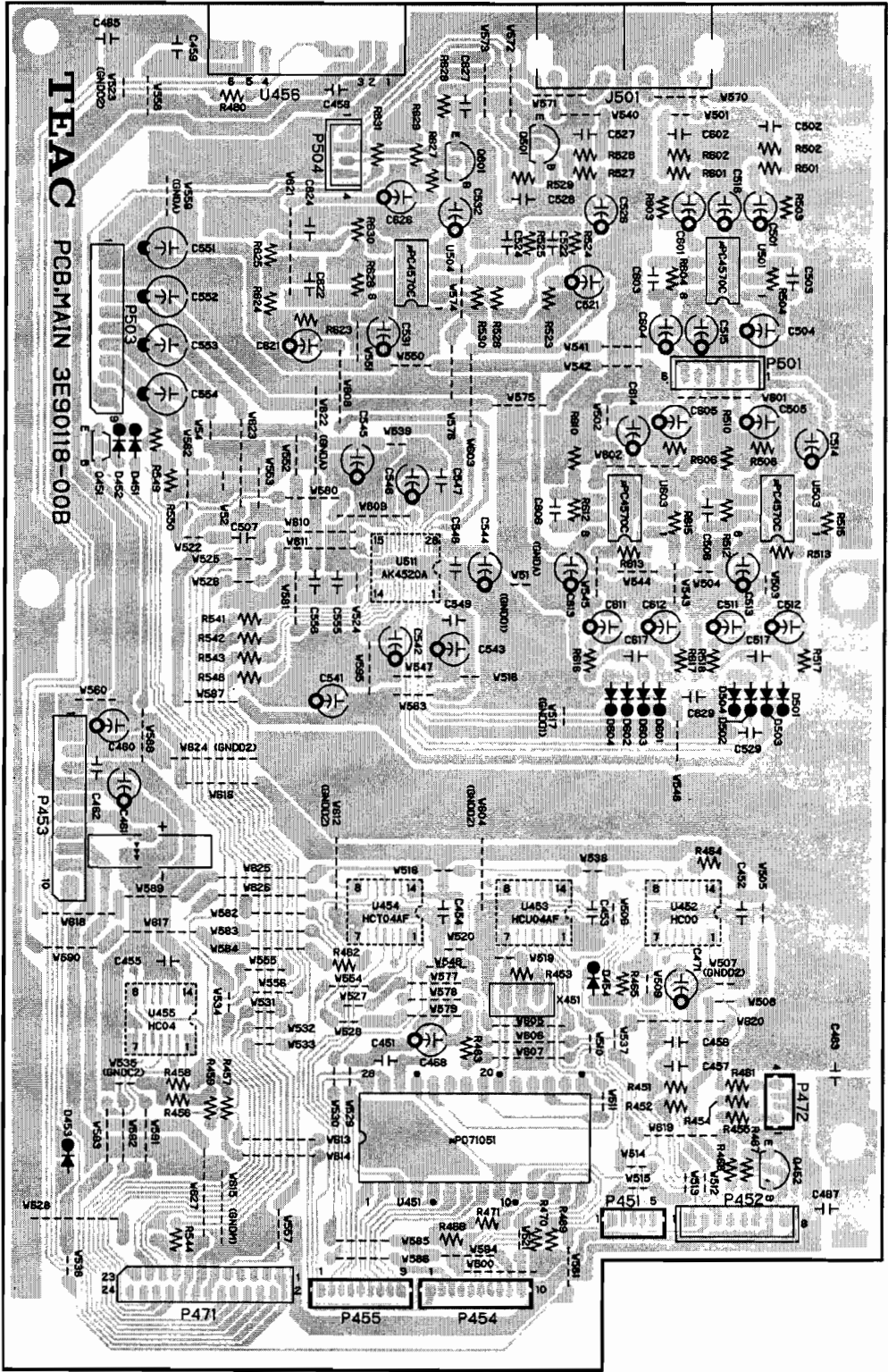
EXPLODED VIEW-2

REF. NO.	PARTS NO.	DESCRIPTION	REMARKS
2- 1	* 9A07568300	MTR ASSY BLK	D018S014
2- 2	9A07550600	MTR ASSY BLK	D018S012
2- 3	9A07550700	MTR ASSY BLK	D018S013
2- 5	* 9A08803100	SW LEVER	DD116-23
2- 6	* 9A07551000	SCREW, #0 PAN 1.7X2	FG164-15
2- 7	9A07554800	SLED PINION	DN114-12
2- 8	9A07552800	2ND GEAR	DN113-12
2- 9	9A07552900	1ST GEAR	DN112-12
2-10	* 9A07554300	SHAFT P/U	DL111-11
2-11	* 9A07554900	SPINDOL STABILIZER	DK112-13
2-12	* 9A08803200	REAR GUIDE BLK	DD111-18
2-13	* 9A07568400	FRONT GUIDE BLK	DD112-17
2-14	* 9A07568500	LOCATOR	DD115-13
2-15	9A08803300	PICK UP UNIT	DV111-12
2-16	* 9A07568600	2ND WORM	DN116-22
2-17	* 9A07555500	SLED BASE	DD114-15
2-18	* 9A07555600	RACK SLIDE SPG	DK111-11
2-19	* 9A07555700	RACK SLIDER	DC112-12
2-20	* 9A07555800	SW LEV SPG	DK118-13
2-21	* 9A08803400	SCREW, #0 PAN 1.7X3NI	UG26F-11
2-22	* 9A07556000	SCREW, 1.7 3X6	UG23V-12
2-23	* 9A07556100	SCREW, 1.7 3X4	UG23V-11
2-24	* 9A07556200	SCREW, #0 PAN 3 1.7X4	UG16C-12
2-25	9A07556300	O/W HD	DU111-11
2-31	* 9A07568700	SIDE BKT(R)	DC114-17
2-32	* 9A07557000	SCREW, PAN TT 2X4	KG194-34
2-35	* 9A08803500	HOLDER ARM	DC119-1
2-36	* 9A08803600	TOP PLATE(AUTO)	DC124-23
2-42	* 9A07558000	LIFTER SPG	DK119-11
2-43	* 9A07558100	HD LIFTER	DC123-13
2-44	* 9A07558200	HOLDER A/SPG	DK115-12
2-45	9A08803700	PCB CONTROL BLK	D016S047
2-46	* 9A08803800	LID HOLD BKT	DC149-12
2-48	9A07558600	FPC PICK	DP113-11
2-49	* 9A07558700	SW NOB(L)	DL113-12
2-50	* 9A07558800	SW NOB(S)	DL112-12
2-52	* 9A07559000	W POLY, 2.1X0.25	FJ111-18
2-53	* 9A07559100	LID OPENER SPG	DK130-11
2-54	9A07559200	INSULATOR	DR111-11
2-55	* 9A07559300	LID OPENER	DC147-11
2-56	* 9A07559400	SCREW, TP 2.0X5.0 ZU.CH	UG23U-12
2-57	* 9A08803900	STOPPER SPG	DK128-13
2-58	* 9A07559600	HOLDER STOPPER	DC130-12
2-66	* 9A07560400	BUSH	DD131-11
2-68	* 9A07560600	LID HOLD	DC148-11
2- B	* 9A08804000	LDG ASSY BLK	D014S011
2- C	* 9A07569000	LDG ASSY BLK	D022S012
2- E	* 9A08804100	LDG ASSY BLK	D022S014

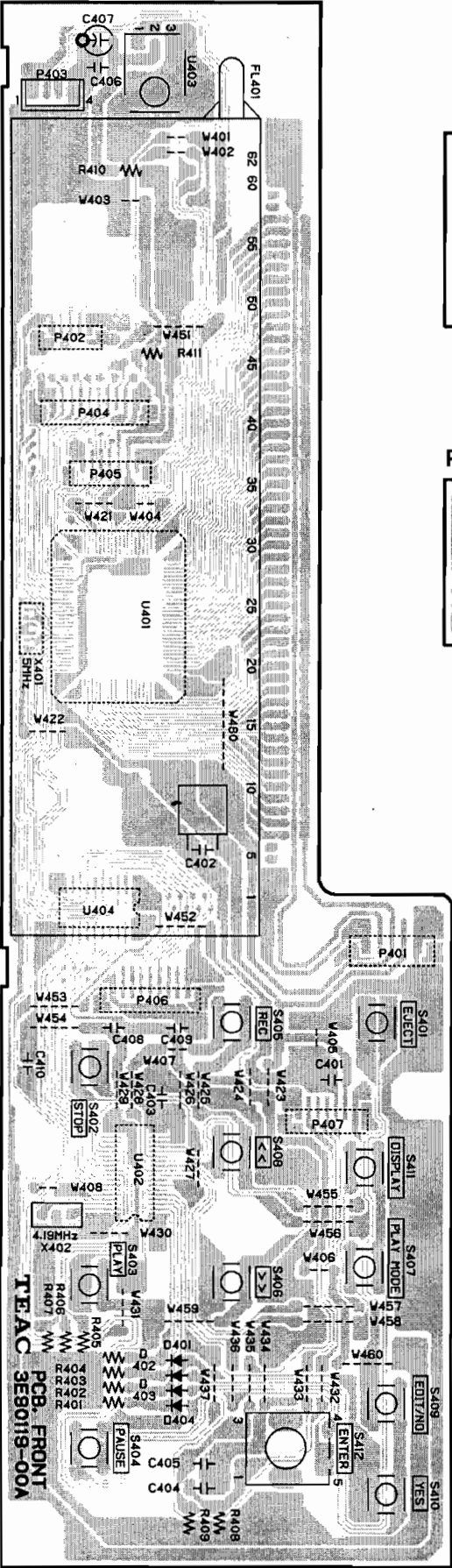
5. PC BOARDS AND PARTS LIST

基板図とパーツリスト

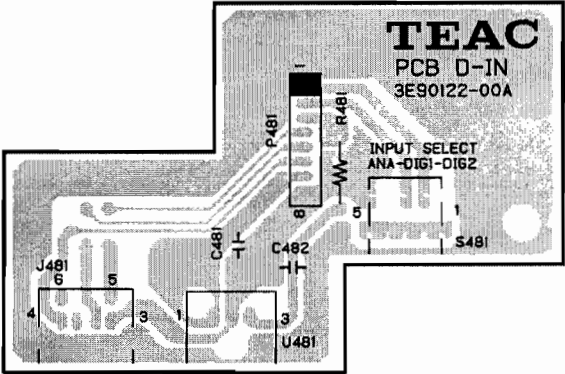
MAIN PCB



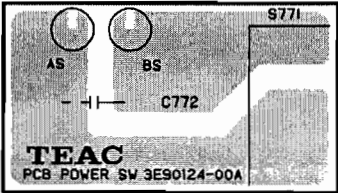
FRONT PCB



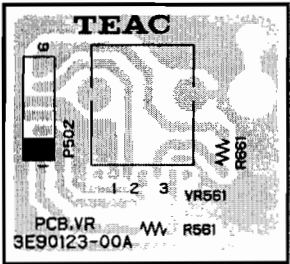
D-IN PCB



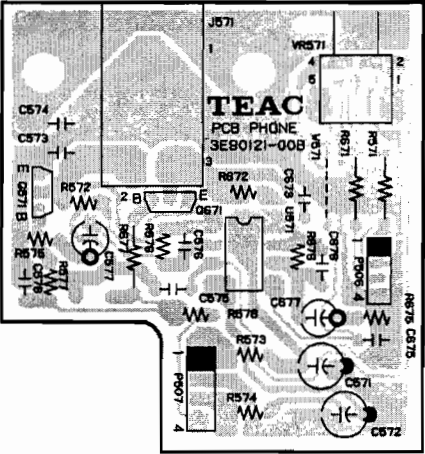
POWER SW PCB



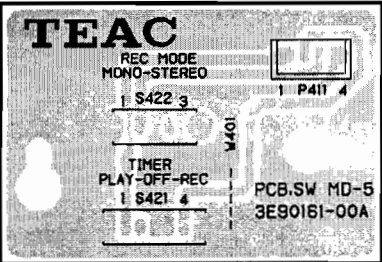
VR PCB



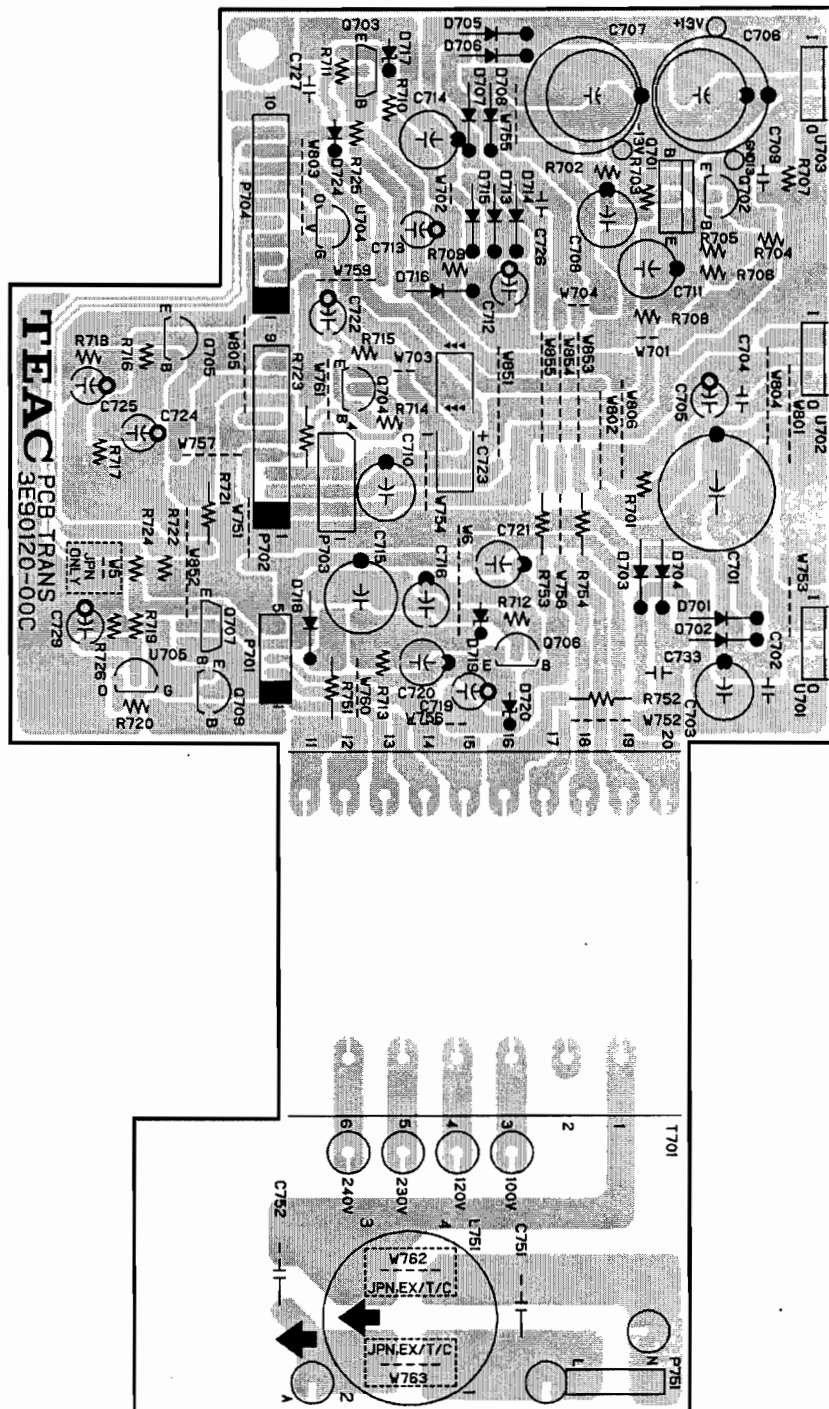
PHONE PCB



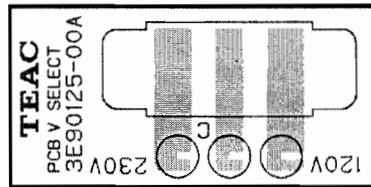
SW PCB



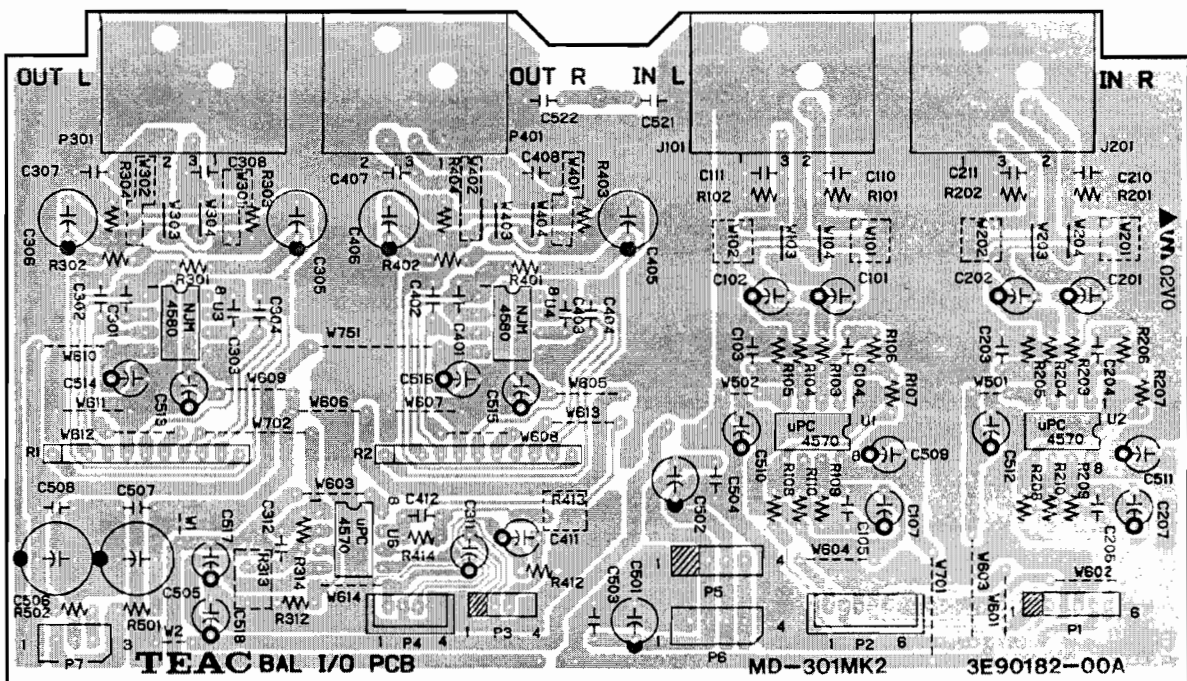
TRANS PCB



V SELECT PCB



BAL I/O PCB



GATHER PCB ASSY

REF. NO.	PARTS NO.	DESCRIPTION
	* E95123800A	PCB ASSY, GATHER [J]
	* E95123813A	PCB ASSY, GATHER [US/C/GE]
	* E95123840A	PCB ASSY, GATHER [E, UK]
	* E95123860A	PCB ASSY, GATHER [A]
		PCB ASSY, MAIN
	* 3E0070800A	FLAT CABLE, FFC 24P 110MM
D451, 452	3S000241	DIODE, 1SS133
D453	3S001881	D, SCHOTTKY RB441Q-40T-77
D454	3S000241	DIODE, 1SS133
D501-504	3S000241	DIODE, 1SS133
D601-604	3S000241	DIODE, 1SS133
J501	3E010590	JACK, RJ-1073B-09-0320A
P451	3E007980	CONNECTOR, B5B-ZR
P452	3E010400	CONNECT PLUG, B8B-PH-K-S
P453	3E001220	CONNECT PLUG, B10B-EH-A
P454	3E008030	CONNECTOR, B10B-ZR
P455	3E008020	CONNECTOR, B9B-ZR
P471	3E007250	CONNECTOR, 6232 024 006
P472	3E007970	CONNECTOR, B4B-ZR
P501	3E010380	CONNECT PLUG, B6B-PH-K-S
P503	3E001210	CONNECT PLUG, B9B-EH-A
P504	3E010360	CONNECT PLUG, B4B-PH-K-S
Q451	3S000301	TR, DTA124ES
Q501, 601	3S000731	TR, 2SD2144S
U451	3S001720	IC, UPD71051C-10
U452	3S001620	IC, 74HC00 SOP
U453	3S001340	IC, 74HC04AF
U454	3S001350	IC, 74HCT04AF
U455	3S001630	IC, 74HC04 SOP
U456	3S001690	IC, GP1F33RT
U501	3S000280	IC, UPC4570C
U503, 603	3S000280	IC, UPC4570C
U504	3S000280	IC, UPC4570C
U511	3S001670	IC, AK4520A
X451	3E007350	RESONATOR, 2MHZ
		PCB ASSY, D-IN
J481	3E007310	CONNECTOR, MINI-DIN 6P
S481	3E007360	SW, ROTARY SRBM13N
U481	E0062040	OPT CONN, GP1FA550RZ
		PCB ASSY, POWER SW
C772	△ 3E004300	S. KILLER, CS12-F2GA472MYAS
S771	△ 3E003770	SW, POWER SDDL1-A2-F-1

GATHER PCB ASSY

REF. NO.	PARTS NO.	DESCRIPTION
VR561	3R0053510A	PCB ASSY, VR VAR RES, 5KAY2
		PCB ASSY, FRONT
	* 3M0057800A	HOLDER, FL
D401-404	3S000241	DIODE, 1SS133
FL401	3E007330	FL, BJ496GK
P401	3E007870	CONNECTOR, B5B-PH-SM3-TB
P402	3E008090	CONNECTOR, B5B-ZR-SM3-TF
P403	3E010360	CONNECT PLUG, B4B-PH-K-S
P404	3E007810	CONNECTOR, B10B-ZR-SM3-TF
P405	3E008110	CONNECTOR, B7B-ZR-SM3-TF
P406	3E008130	CONNECTOR, B9B-ZR-SM3-TF
P407	3E008110	CONNECTOR, B7B-ZR-SM3-TF
S401-411	3E002070	SW, TACT SKQSAB HMR-187
S412	3E007320	SW, ENCODER EC11B15244
U401	S00429100A	IC, UPD780208GF-089-3BA
U402	3S0017300A	IC, UPD754302GS-101
U403	3S000760	REMOCON, SENSOR, SBX1976-52
U404	3S001640	IC, 74HC573 SOP
X401	3E005470	RESONATOR, CERAMIC 5.00MHZ
X402	3E005480	RESONATOR, CERAMIC 4.19MHZ
		PCB ASSY, PHONE
J571	3E002160	JACK, JY-6313-01-030GD
Q571, 671	3S000731	TR, 2SD2144S
U571	3S001700	IC, NJM4580D
VR571	3R004870	VAR RES, 50KAX2
		PCB ASSY, SW
P411	3E010360	CONNECT PLUG, B4B-PH-K-S
S421	3E007370	SW, SLIDE SSSS9 1-3
S422	3E007380	SW, SLIDE SSSS9 1-2

GATHER PCB ASSY

REF. NO.	PARTS NO.	DESCRIPTION
		PCB ASSY, TRANS [J] PCB ASSY, TRANS [US/C/GE] PCB ASSY, TRANS [E, UK] PCB ASSY, TRANS [A]
C701	△ 3C001260	CE, 16V 4700UF M
C706, 707	△ 3C001080	CE, 25V 1000UF M
C712	△ 3C000410	CE, 25V 22UF M
C713	△ 3C000340	CE, 25V 10UF M
C714	△ 3C000770	CE, 25V 220UF M
C715	△ 3C000790	CE, 50V 220UF M
C719	△ 3C000530	CE, 10V 47UF M
C723	3C009180	CAP, EDL 1F 5.5V
C726	△ 3C003260	CQ, 100V 0.010UF J MYLAR
C733	△ 3C003260	CC, 100V 0.010UH J MYLAR
D701-708	△ 3S000031	D10DE, 1N4003-TR
D713-716	△ 3S000031	D10DE, 1N4003-TR
D717	3S000681	ZDI, MTZJ5.1B
D718	△ 3S000031	D10DE, 1N4003-TR
D719	3S001750	ZDI, MTZJ33B
D720	△ 3S001891	ZDI, MTZJ6.2B
D724	3S000241	D10DE, 1SS133
L751	△ 3E004290	COIL, 1MH/1.5A [E, UK, A]
P703	3E001160	CONNECT PLUG, B4B-EH-A [J]
	3E008590	CONNECT PLUG, 4P 5267-04A-X [EXCEPT J]
P751	3E002170	TERMINAL LAPPING 2P
Q701	△ 3S000400	TR, 2SB1015Y
Q702, 703	△ 3S000020	TR, 2SA1015GR
Q704, 705	△ 3S000000	TR, 2SC1815GR
Q706	△ 3S000020	TR, 2SA1015GR
Q707	3S000301	TR, DTA124ES
Q709	3S000291	TR, DTC124ES
U701, 702	△ 3S000650	IC, NJM7805FA
U703	△ 3S000800	IC, BA178M07T
U704, 705	△ 3S001710	IC, RE5VL26CA
		PCB ASSY, V SELECT [US/C/GE]
	△ 3E002110	SW, SLIDE SL13B-022

BAL I/O PCB ASSY

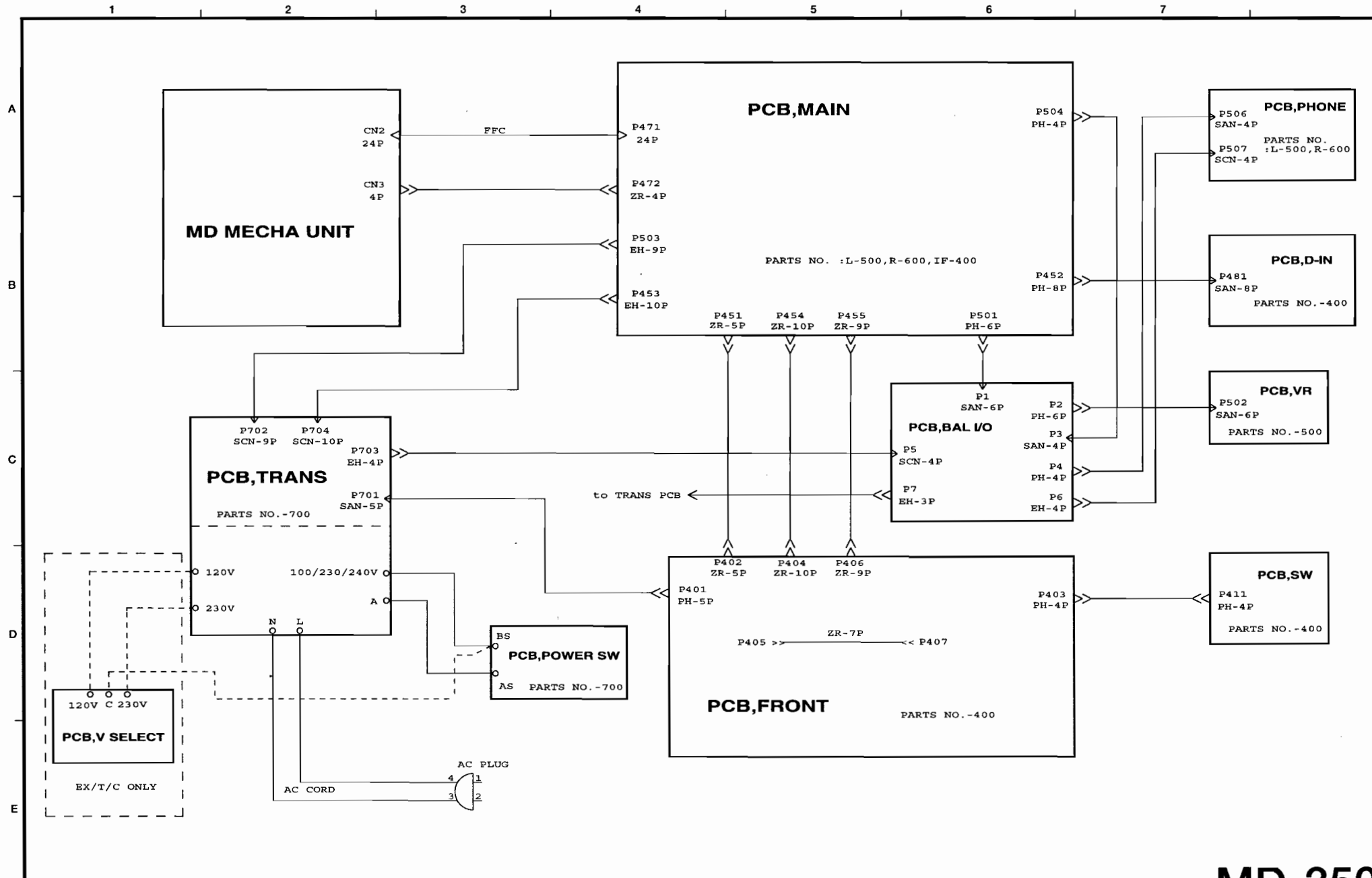
REF. NO.	PARTS NO.	DESCRIPTION
	* 3E9518200A	PCB ASSY, BAL I/O
J101, 201	3E010320	JACK, XLR NC3FAH1
J301, 401	3E010330	PLUG, XLR NC3MAH
P2	3E010380	CONNECT PLUG, B6B-PH-K-S
P4	3E010360	CONNECT PLUG, B4B-PH-K-S
P6	3E001160	CONNECT PLUG 4P, B4B-EH-A
P7	3E001150	CONNECT PLUG 3P, B3B-EH-A
R1, 2	R00978500A	RES ARRAY, M-6277
U1, 2	3S000280	IC, UPC4570C
U3, 4	3S001700	IC, NJM4580D
U6	3S000280	IC, UPC4570C

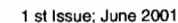
6. INCLUDED ACCESSORIES

付属品

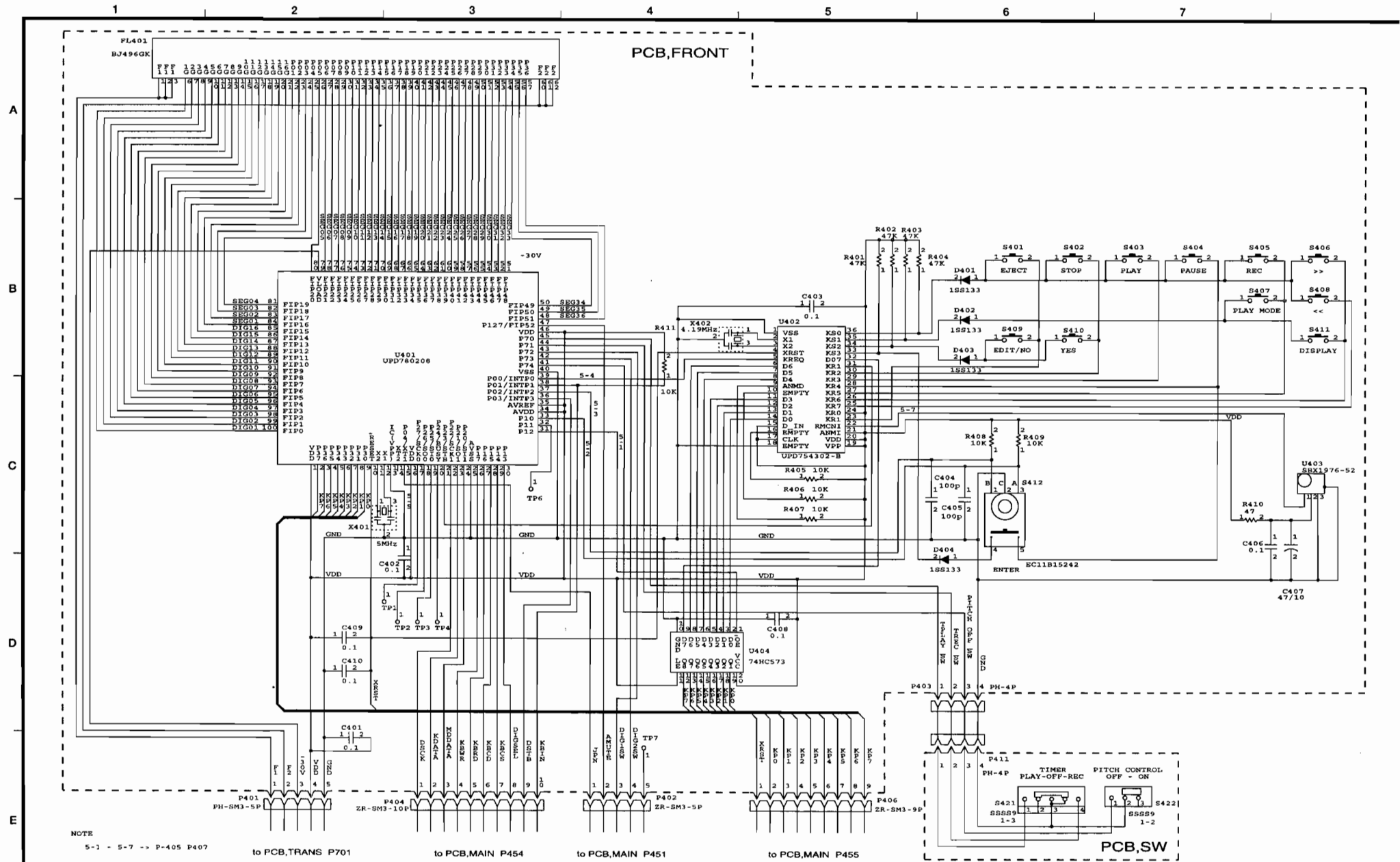
INCLUDED ACCESSORIES

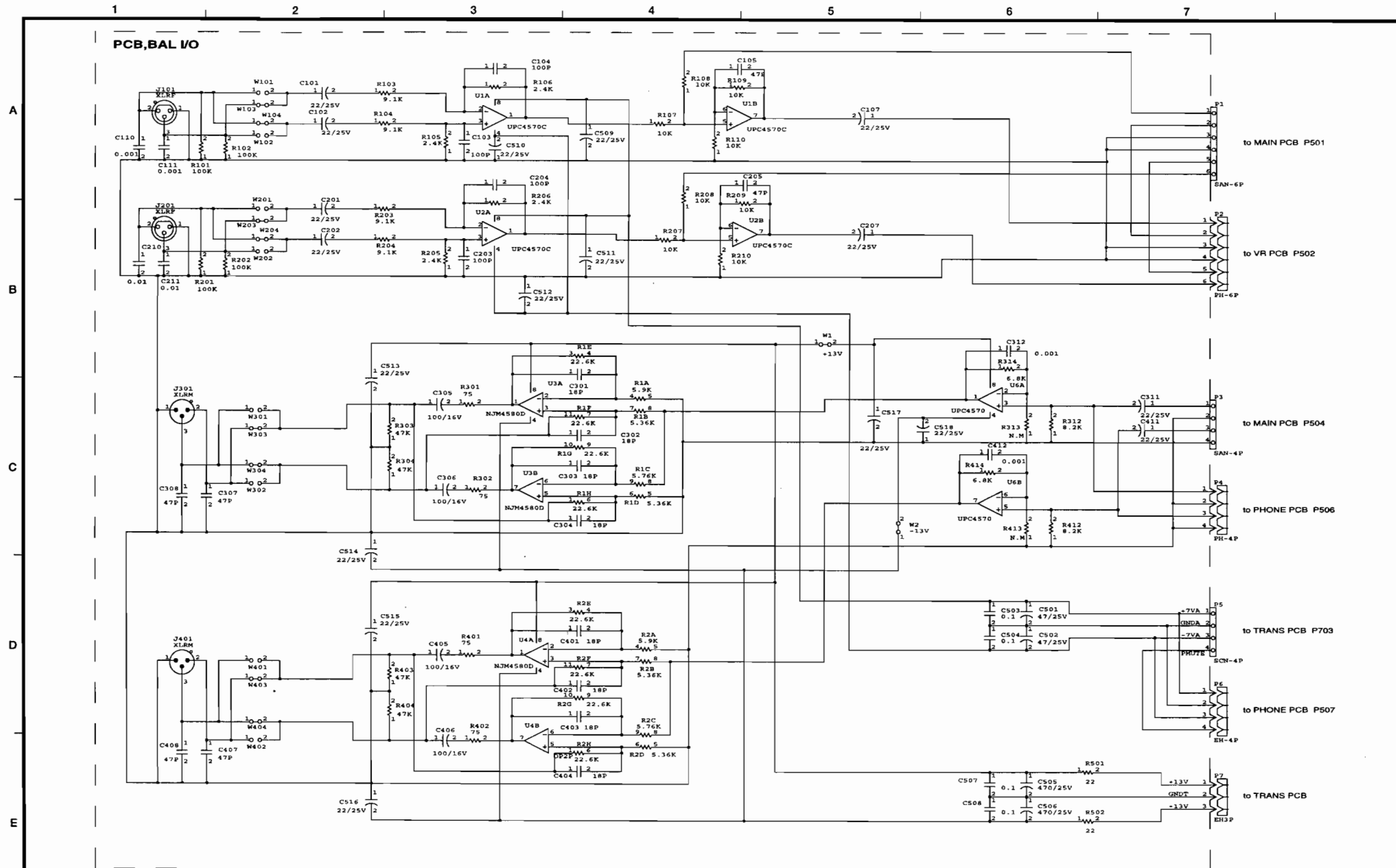
REF. NO.	PARTS NO.	DESCRIPTION	REMARKS
	D00602200A	OWNER'S MANUAL, JAPANESE [J]	ENGLISH, FRENCH, GERMAN, ITALIAN, SPANISH
	D00602210A	OWNER'S MANUAL, E/F/G/I/S [EXCEPT J]	
	3E0103100A	REMOTE CONTROL UNIT, RC-32	
	*3E003660	BATTERY, UM-3 (2P X ED)	
	*3M0079410A	TEMPLATE	
	*3M0028300A	RACK MOUNT SCREW KIT	

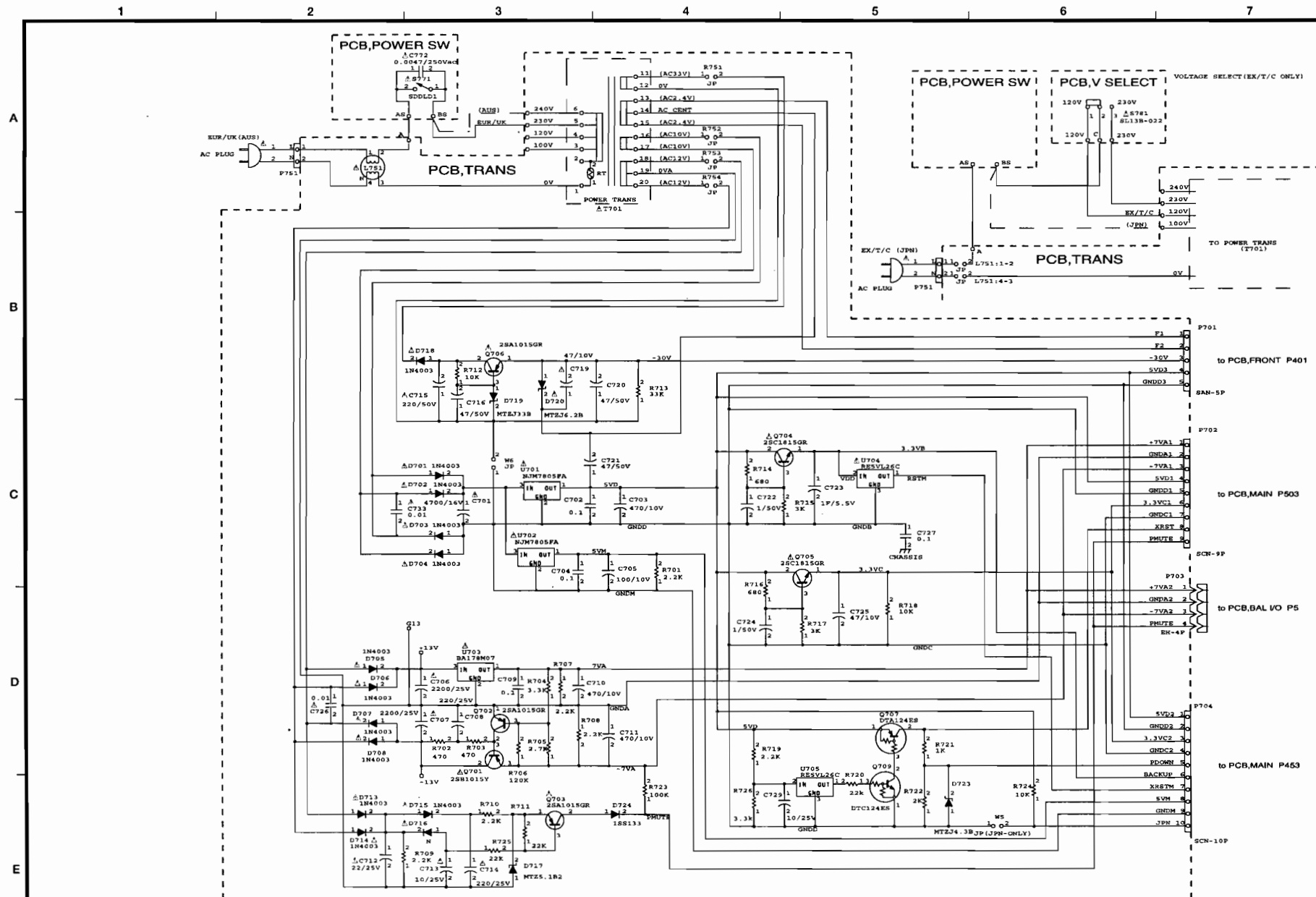












NOTE

△ Parts marked with this sign are safety critical components. They must be replaced with identical components - refer to the appropriate parts list and ensure exact replacement.

注意

△ マークのある部品は安全重要部品です。交換するときは必ずデータブック指定の部品を使用してください。



